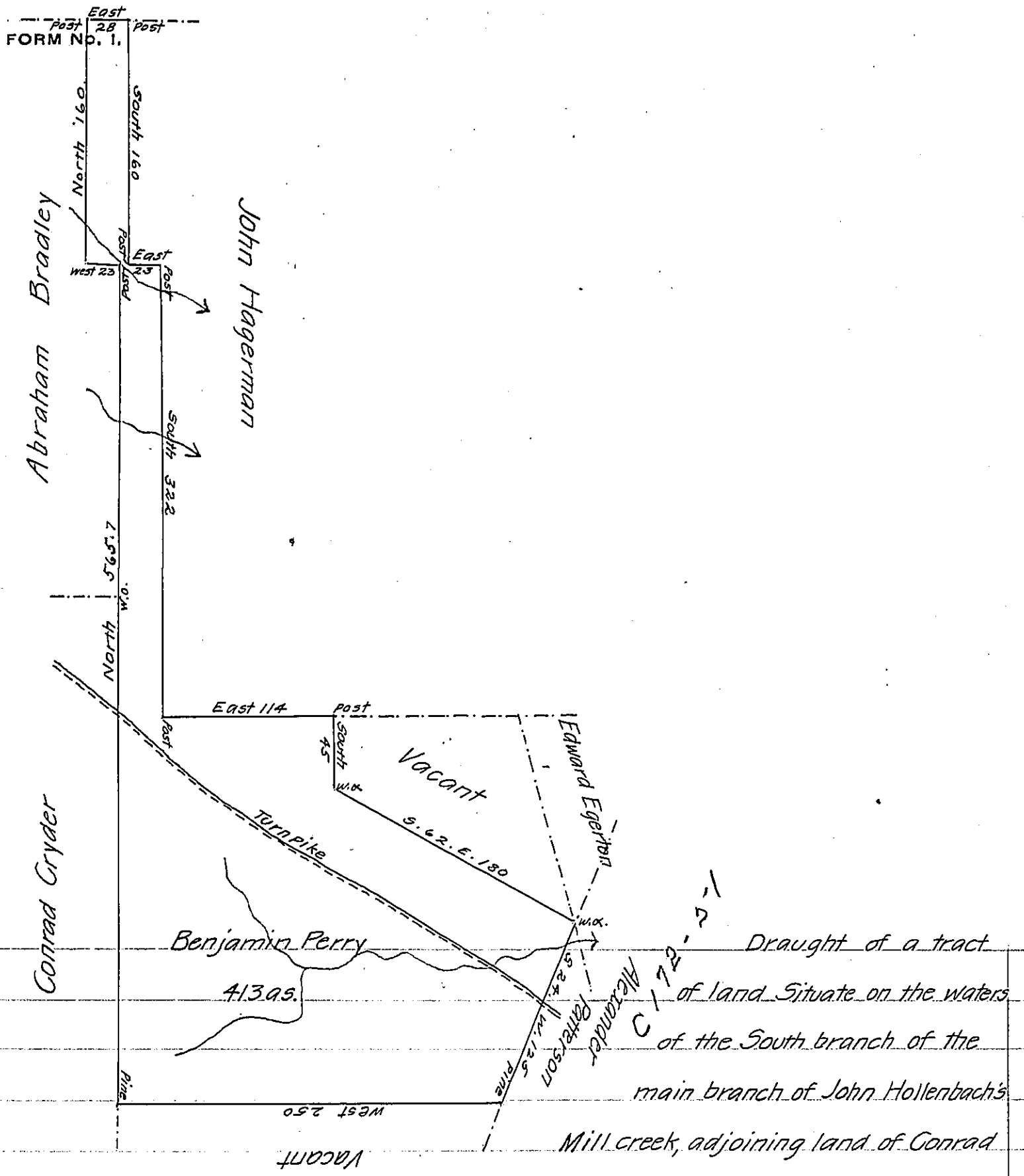


Joseph Hagerman

FORM No. 1.



Draught of a tract
of land Situate on the waters
of the South branch of the
main branch of John Hollenbach's
Mill creek, adjoining land of Conrad
Cryder and Edward Egerton, in the Town-
ship of Wilkesbarre, Luzerne County Containing four hundred and thirteen acres
and the usual allow^{ce} &c. Surveyed the above described tract of land for Ben-
jamin Perry the 25th. day of December A.D. 1818. By Virtue of his warrant
dated the 13th. day of August 1794.

John Bennet D.S.

To Jacob Spangler Esquire }
Survr. Genl. }

IN TESTIMONY that the above is a copy of the original remaining on file in
the Department of Internal Affairs of Pennsylvania, made
conformably to an Act of Assembly approved the 16th day of
February, 1833, I have hereunto set my Hand and caused
the Seal of said Department to be affixed at Harrisburg,
this tenth day of September 1906

Jacob P. Brown
Secretary of Internal Affairs